

115V / 15A | Bend up to #8 (1" - 25.4 mm) Grade 60 Rebar | 0-180° Angle Bends | Angle Preset Control

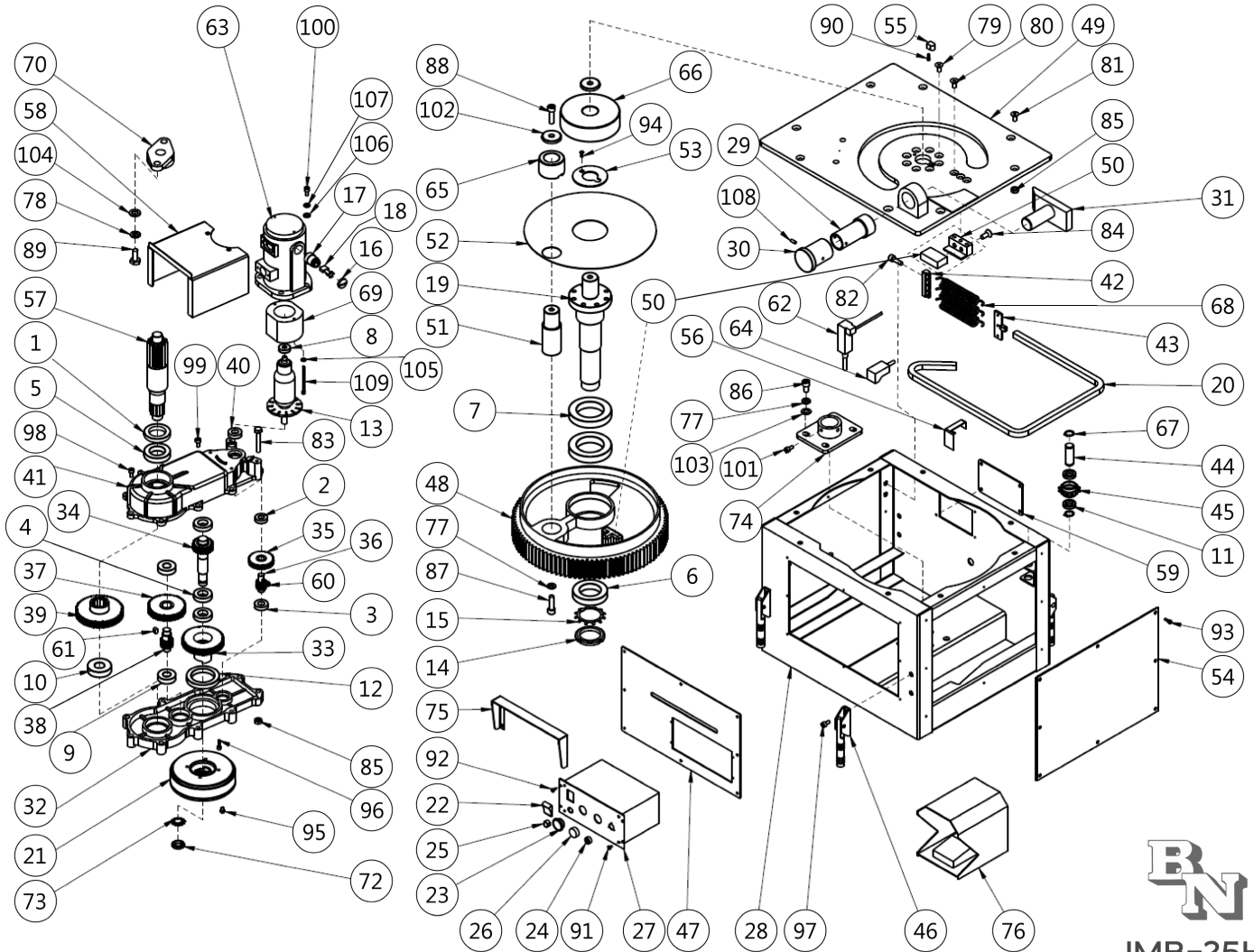
Rebar Bender with Stand & Control Pedals



JMB-25H

The JMB-25H is a table-style electric rebar bending machine. The unit ships with a heavy-duty stand for the machine, bending rollers, steel carrying case, tool kit, standard foot pedal control switch, and includes a one-year limited manufacturer warranty.

Exploded View Drawing



JMB-25H

ELECTRIC REBAR BENDER

JMB-25H Roller Selection Table

| Rebar Size (Diameter) | Center Roller # | Center Roller Outside Diameter (Part #66) | Moving Roller | Moving Roller Outside Diameter (Part #65) | *Quantity (per bend) |
|-----------------------|-----------------|---|---------------|---|----------------------|
| #8 (1") | 7 | 5.97" (152 mm) | 1 | 2.54" (65 mm) | 1 |
| #7 (7/8") | 6 | 5.15" (131 mm) | 3 | 3.63" (92 mm) | 1 |
| #6 (3/4") | 4 | 4.45" (114 mm) | 5 | 4.45" (114 mm) | 2 |
| #5 (5/8") | 3 | 3.63" (92 mm) | 6 | 5.15" (131 mm) | 2 |
| #4 (1/2") | 2 | 3.09" (79 mm) | 8 | 5.15" (131 mm) | 3 |
| #3 (3/8") | 1 | 2.54" (65 mm) | 9 | 7.14" (181 mm) | 4 |

**Indicates the number of rebar pieces, or bars, that may be bent at one time for each rebar size (diameter)*



BN Products-USA™

A DIVISION OF BENNER-NAWMAN, INC.

WWW.BNPRODUCTS.COM

JMB-25H Electric Rebar Bender

BN Customer Service (800) 992-3833

| No. | Part No. | Qty | Description | No. | Part No. | Qty | Description |
|-----|------------|-----|------------------------------|-----|--------------------------------|-----|------------------------------|
| 1 | JMBP-00001 | 1 | Oil Seal Jmb-25h | 36 | JMBP-00036 | 1 | 8th Gear (28phi Gear) |
| 2 | JMBP-00002 | 1 | 6002ZZ Bearing | 37 | JMBP-00037 | 1 | 5th Gear (98phi Gear) |
| 3 | JMBP-00003 | 2 | 6003ZZ Bearing | 38 | JMBP-00038 | 1 | 4th Gear (34phi Gear) |
| 4 | JMBP-00004 | 3 | 6005ZZ Bearing | 39 | JMBP-00039 | 1 | 3rd Gear (123 Phi Gear) |
| 5 | JMBP-00005 | 1 | 6008ZZ Bearing | 40 | JMBP-00040 | 1 | 6003ZZ Bearing |
| 6 | JMBP-00006 | 1 | 6011DD Bearing | 41 | JMBP-00041 | 1 | Gear Box Top Housing |
| 7 | JMBP-00007 | 2 | 6014ZZ Bearing | 42 | JMBP-00042 | 1 | Spring Bracket |
| 8 | JMBP-00008 | 1 | 6200ZZ Bearing | 43 | JMBP-00043 | 1 | Spring Holder |
| 9 | JMBP-00009 | 2 | 6204ZZ Bearing | 44 | JMBP-00044 | 3 | Shaft For Chain Gear |
| 10 | JMBP-00010 | 1 | 6305ZZ Bearing | 45 | JMBP-00045 | 3 | Chain Sprocket |
| 11 | JMBP-00011 | 2 | 6804ZZ Bearing | 46 | JMBP-00046 | 1 | Handle |
| 12 | JMBP-00012 | 1 | 6912ZZ Bearing | 47 | JMBP-00047 | 1 | Front Pannel |
| 13 | JMBP-00013 | 1 | Amature JMB-25H | 48 | JMBP-00048 | 1 | Large Gear (1st Gear) |
| 14 | JMBP-00014 | 1 | AN11 Lock Nut | 49 | JMBP-00049 | 1 | Top Plate |
| 15 | JMPB-00015 | 1 | AW11 Washer | 50 | JMBP-00050 | 1 | Urethane Bumper Assembly |
| 16 | JMBP-00016 | 2 | Carbon Cap | 51 | JMBP-00051 | 1 | Moving Roller Shaft |
| 17 | JMBP-00017 | 2 | Carbon Holder | 52 | JMBP-00052 | 1 | Top Dust Cover |
| 18 | JMBP-00018 | 2 | Carbon Brush | 53 | JMBP-00053 | 1 | Top Center Plate |
| 19 | JMBP-00019 | 1 | Center Shaft Assy JMB-25H | 54 | JMBP-00054 | 1 | Side Cover |
| 20 | JMBP-00020 | 1 | Chain | 55 | JMBP-00055 | 1 | Roller Stoper |
| 21 | JMBP-00021 | 1 | Clutch Assy. Jmb-25h | 56 | JMBP-00056 | 1 | Sensor Detector |
| 22 | JMBP-00022 | 1 | On/Off Switch | 57 | JMBP-00057 | 1 | 2nd Gear (Center Shaft Gear) |
| 23 | JMBP-00023 | 1 | Emergency Switch | 58 | JMBP-00058 | 1 | Dust Cover for Gear Box |
| 24 | JMBP-00024 | 1 | Foot S/W Connector | 59 | JMBP-00059 | 1 | Rear Cover |
| 25 | JMBP-00025 | 1 | Fuse | 60 | JMBP-00060 | 1 | Key 6*15*2r |
| 26 | JMBP-00026 | 1 | Start Button | 61 | JMBP-00061 | 1 | Key 8*15*2r |
| 27 | JMBP-00027 | 1 | Control Box Panel | 62 | JMBP-00062 | 1 | Limit Switch |
| 28 | JMBP-00028 | 1 | Frame JMB-25H | 63 | JMBP-00063 | 1 | Motor Housing |
| 29 | JMBP-00029 | 1 | Adjustable Nut | 64 | JMBP-00064 | 1 | Angle Sensor |
| 30 | JMBP-00030 | 1 | Modulator Handle | 65 | *See Roller Part Numbers (p.4) | 1 | Moving Roller |
| 31 | JMBP-00031 | 1 | Bar Stopper | 66 | | 1 | Center Roller |
| 32 | JMBP-00032 | 1 | Gear Box Bottom Housing | 67 | JMBP-00072 | 3 | Snap ring |
| 33 | JMBP-00033 | 1 | 7th Gear (Clutch Gear) | 68 | JMBP-00073 | 3 | Tension spring |
| 34 | JMBP-00034 | 1 | 6th Gear (Clutch Shaft Gear) | 69 | JMBP-00074 | 1 | Stator |
| 35 | JMBP-00035 | 1 | 9th Gear (69phi Gear) | 70 | JMBP-00075 | 1 | Flange unit UCFL205 |



BN Products-USA™

A DIVISION OF BENNER-NAWMAN, INC.

WWW.BNPRODUCTS.COM

JMB-25H Electric Rebar Bender

BN Customer Service (800) 992-3833

| No. | Part No. | Qty | Description | No. | Part No. | Qty | Description |
|-----|------------|-----|---------------------------|--|------------|-----|----------------------|
| 72 | JMBP-00077 | 1 | AN04 Lock nut | 95 | JMBP-00149 | 9 | Socket bolt M6 X 8 |
| 73 | JMBP-00078 | 1 | AW04 Lock washer | 96 | JMBP-00150 | 4 | Socket bolt M6 X 15 |
| 74 | JMBP-00086 | 1 | Center Shaft holder | 97 | JMBP-00151 | 8 | Socket bolt M8 X 20 |
| 75 | JMBP-00087 | 1 | Control Panel guard | 98 | JMBP-00152 | 3 | Socket bolt M10 X 55 |
| 76 | JMBP-00088 | 1 | Foot switch | 99 | JMBP-00153 | 4 | Socket bolt M10 X 30 |
| 77 | JMBP-00131 | 4 | M12 spring washer | 100 | JMBP-00154 | 4 | Socket bolt M8 X 25 |
| 78 | JMBP-00132 | 2 | M14 spring washer | 101 | JMBP-00155 | 2 | Socket bolt M8 X 20 |
| 79 | JMBP-00133 | 8 | Countersunk bolt M10 X 25 | 102 | JMBP-00156 | 2 | Roller washer |
| 80 | JMBP-00134 | 3 | Countersunk bolt M10 X 35 | 103 | JMBP-00157 | 3 | M12 Plate washer |
| 81 | JMBP-00135 | 8 | Countersunk bolt M10 X 30 | 104 | JMBP-00158 | 2 | M14 Plate washer |
| 82 | JMBP-00136 | 2 | Socket bolt M10 X 40 | 105 | JMBP-00159 | 2 | M5 Spring washer |
| 83 | JMBP-00137 | 2 | Socket bolt M10 X 65 | 106 | JMBP-00160 | 4 | M8 Plate washer |
| 84 | JMBP-00138 | 3 | Countersunk bolt M8 X 35 | 107 | JMBP-00161 | 4 | M8 Spring washer |
| 85 | JMBP-00139 | 9 | M10 Nut | 108 | JMBP-00162 | 2 | Spring pin 6X15 |
| 86 | JMBP-00140 | 4 | Socket bolt M12 X 20 | 109 | JMBP-00163 | 2 | Round bolt M5 X 80 |
| 87 | JMBP-00141 | 1 | Socket bolt M12 X 30 | Ordering Information BN Products-USA™ Customer Service <i>Telephone:</i> (800) 992-3833 <i>Email:</i> mail@bnproducts.com <i>Company Information:</i> www.BNProducts.com | | | |
| 88 | JMBP-00142 | 2 | Socket bolt M12 X 25 | | | | |
| 89 | JMBP-00143 | 2 | Hex bolt M14 X 1.5 | | | | |
| 90 | JMBP-00144 | 1 | Socket bolt M6 X 15 | | | | |
| 91 | JMBP-00145 | 4 | Truss bolt M5 X 10 | | | | |
| 92 | JMBP-00146 | 4 | Truss bolt M4 X 10 | | | | |
| 93 | JMBP-00147 | 28 | Flange bolt M5 X 10 | | | | |
| 94 | JMBP-00148 | 1 | Countersunk bolt M5 X 10 | | | | |

JMB-25H Roller Part Numbers

| Roller Number | Part Number | Roller Number | Part Number |
|----------------------|-------------|----------------------|-------------|
| ROLLER #1 (25) 65MM | JMBP-00065 | ROLLER #6 (25) 131MM | JMBP-00071 |
| ROLLER #2 (25) 79MM | JMBP-00067 | ROLLER #7 (25) 152MM | JMBP-00066 |
| ROLLER #3 (25) 92MM | JMBP-00068 | ROLLER #8 (25) 165MM | JMBP-00079 |
| ROLLER #4 (25) 114MM | JMBP-00069 | ROLLER #9 (25) 181MM | JMBP-00080 |
| ROLLER #5 (25) 114MM | JMBP-00070 | | |

BN Products-USA™